

PT205(LW) - COMPOSITE AND POLYMER EARTH PITS

Description:

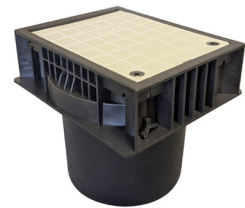
Used to allow easy and safe access to electrodes and conductors.

Material:

Composite/Polymer



PT205



PT205LW

OTHER ADDITIONAL INFORMATION

Composite:

Size: 280mm x 185mm

Material: Composite

Usage: Cover connection of Earth Rod to electrical installation.

Weight: 8Kg

Load Rating: 5000Kg



Polymer:

Size: 247mm x 192mm

Material: Polymer

Usage: Cover connection of Earth Rod to electrical installation

Weight: 1.8Kg

Load Rating: 5000Kg

Central Rod Hole: 70mm

Standard: Manufactured in accordance with BS EN62305-3

