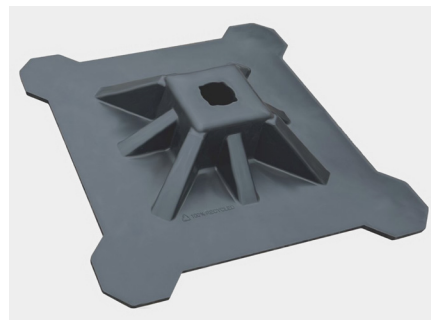


**FXH500 - H-FRAME KIT****Description:**

Plastic support feet for 41mm channels and 48mm dia. poles provide durable, stable bases for your strut installations.

**Material:**

100% Recycled Plastics with a pre-fitted anti-vibration foam pad.

**OTHER ADDITIONAL INFORMATION**

Size	L500mm x W500mm x H100mm
Weight	1.70kg
Material	100% Recycled Polypropylene with Anti-Vibration PA60 Foam Pad
Dual Channel	41x41mm Square Strut or 48mm dia. Circular Pole
Load Tested	525kgf: ASTM D642-00
Packing Info	Consisting of 2x Support Feet, 2x Angled Brackets, 4x Bolts, 4x Channel Nuts, 4x Washers