



Edition 1

Earthing & Accessories

Your comprehensive Earthing booklet
encompasses all essential earthing
accessories.

DELIGO



Earthing Box with Safety Label - Green

The IP56 Earth Electrode Box is made from ABS plastic, designed to safeguard and stabilize the connection to an earth point. Each box includes four pozi-drive screws for installation and a warning sticker that reads 'SAFETY ELECTRICAL CONNECTION - DO NOT REMOVE', to deter tampering.



When should you use Earth Electrode Boxes?

Earth Electrode Boxes, also known as Earthing Connection Boxes, are intended for use in the UK market as they are equipped with the necessary warning label. These boxes are specifically crafted to accommodate earth wire connections to earth bars or rods.

www.discover.deligo.co.uk/egbc

Code	Type
ECBG	100 x 100 x 50mm - Green

Earthing Box with Safety Label - Black

The Earth Connection Box comes equipped with a BS7671 warning label and is designed for use with 20mm conduit and glands. It includes M4 screws and features fixing centers measuring 50.8mm. This box is specifically utilised for housing connections to an earth rod by employing PVC conduit from the building and a nylon gland to the rod.



Code	Type
ECB	Black

www.deligo.co.uk

Access our complete range of Earthing Products and more through our website. Enjoy a 1% discount on each online order and seize the opportunity to win our Monthly Prize Draw by spinning the Wheel of Fortune!

If you're accessing this via PDF, click each product for more info!



Earth Bar & Disconnection Links

Hard-drawn copper bars compliant with BS EN 13601 standards, enhanced with a plastic base, and M10 x 1 1/2" Hex Head Set Screws, accompanied by nuts and washers.



Code	Size
ECB04	4-Way Plain
ECB06	6 Way Plain
ECB104	4-Way Single
ECB106	6-Way Single
ECB108	8-Way Single
ECB110	10-Way Single
ECB112	12-Way Single
ECB204	4-Way Double
ECB206	6-Way Double
ECB208	8-Way Double
ECB210	10-Way Double
ECB212	12-Way Double

Earthing Pits

Earthing Pit - Composite

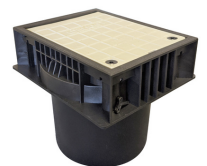
This item, used to secure Earth Rod connections in electrical installations, weighs 5kg and can support loads up to 5000kg.



Code	Size
PT205	280 x 185mm

Earthing Pit - Polymer

This item, used to secure Earth Rod connections in electrical installations, weighs 1.8kg and can support loads up to 5000kg.



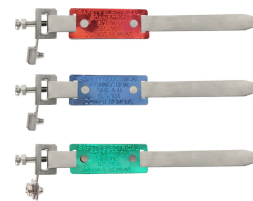
Code	Size
PT205LW	247 x 192mm

Earthing Clamps - Stainless Steel

EC14: For use in dry conditions

EC15: For use in all conditions

EC16: For use in all conditions



Code	Size
EC14	135mm
EC15	135mm
EC16	135mm
EC14-2	200mm
EC15-2	200mm
EC16-2	200mm
EC14-3	263mm
EC15-3	263mm
EC16-3	263mm

Earthing Clamps - Steel

SEC14: For use in dry conditions only



Code	Size
SEC14	135mm
SEC14-2	200mm
SEC14-3	263mm

Clamp Labels

Safety Electric Connection Labels

BS 951



Code	Size
ECL	25 x 63mm

Radiator Clamps

BS951



Code	Type
ECR	1 x Spanner 10 x Radiator Earth Clamps 10 x Radiator Earth Labels

Terminal Earth Blocks

discover.deligo.co.uk/earth-block

Terminal Earth Blocks

Machined Brass with a nickel-plated finish terminal blocks.



Code	Size
EB4	4-Way
EB8	8-Way

Earthing Rods

discover.deligo.co.uk/earth-rod

Copper Bond Earthing Rods - Threaded

High-tensile low-carbon steel with a copper-bonded finish of 25 microns.



Code	Type
ER5/8	5/8 x 4" Threaded

Copper Bond Earthing Rods - Unthreaded

High-tensile low-carbon steel with a copper-bonded finish of 25 microns.



Code	Type
ER3/8	3/8 x 4" Unthreaded

Earthing Rod Accessories

discover.deligo.co.uk/earth-rod-acc

Earthing Rod Accessories

Our assortment of Earth Rod Accessories is designed to complement our ER3/8 and ER5/8.



Code	Type
ERC3/8	3/8" Machined Brass Clamp
ERC3/8	3/8" Two-Part Brass Clamp
ERC5/8	5/8" Standard Brass Clamp
ERCO	5/8" External Brass Coupler
ERS	5/8" Steel Driving Stud

Earthing Nuts - Brass

Brass, self-colored, supplied with a grub screw, nut, and lock washer.



Code	Size
EN20	20mm
EN25	25mm
EN32	32mm

Earthing Nut Packs - Brass

Brass, self-colored, supplied with a grub screw, nut, lock washer and allen key.



Code	Size
EN20-10	10 x 20mm & Allen Key
EN20-2	2 x 20mm & Allen Key
EN25-10	10 x 25mm & Allen Key
EN25-2	2 x 25mm & Allen Key

Hex Key Wrench for Earth Nuts (Allen Key)

These Allen Keys are utilized for the brass earthing nuts.



Code	Size
HK2	2mm
HK3	3mm
HK4	4mm

Earthing Tags

Earthing Tags - Brass

Brass, self-colored, earthing tags.



Code	Size
BET20	20mm
BET25	25mm
BET32	32mm
BET40	40mm
BET50	50mm
BET63	63mm
BET75	75mm

Earth Terminals - Brass

Brass, self-colored, spares for terminal and adaptable boxes.



Code	Size
ET	M4

Related Products

Non-Shrinkable Sleeving

Non-shrink PVC sleeving is available in a range of colors. RoHS3 compliant standards.



Code	Colour	Size
SL2GY	Green/Yellow	2mm x 100m
SL3GY	Green/Yellow	3mm x 100m
SL4GY	Green/Yellow	4mm x 100m
SL5GY	Green/Yellow	5mm x 100m
SL6GY	Green/Yellow	6mm x 100m
SL8GY	Green/Yellow	8mm x 100m
SL10GY	Green/Yellow	10mm x 100m
SL3BU	Blue	3mm x 100m
SL4BU	Blue	4mm x 100m
SL6BU	Blue	6mm x 100m
SL8BU	Blue	8mm x 100m
SL10BU	Blue	10mm x 100m
SL3BR	Brown	3mm x 100m
SL4BR	Brown	4mm x 100m
SL6BR	Brown	6mm x 100m
SL8BR	Brown	8mm x 100m
SL10BR	Brown	10mm x 100m



DELIGO

www.deligo.co.uk
discover.deligo.co.uk/earthing

sales@deligo.co.uk
01384 824 100